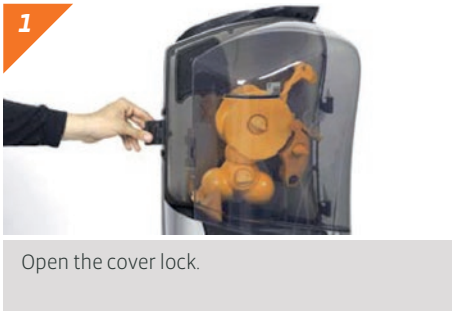


## CLEANING INSTRUCTIONS

MINEX

**Caution!** For a correct cleaning process please follow the instructions below. Make sure machine is unplugged from electrical current.

Zumex recommends **cleaning the machine at least once or twice a day**, depending on how much it is used in order to maintain optimal food hygiene conditions.



1 Open the cover lock.



2 Open the cover and pull upwards. Remove the cover.



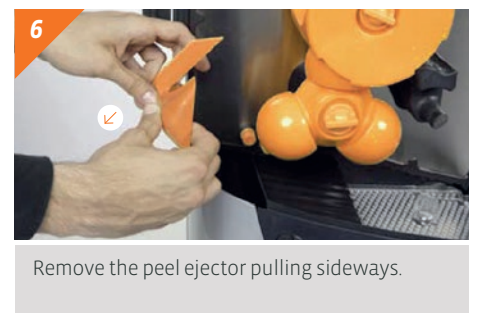
3 Extract the retainer pulling out.



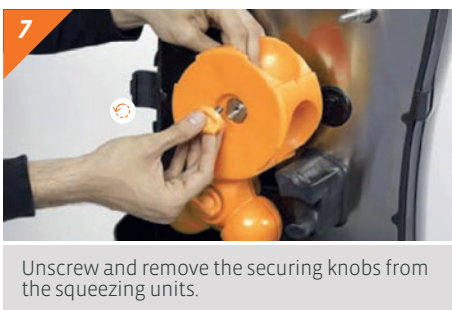
4 Release the twirler blade and support turning the blade lock 180°.



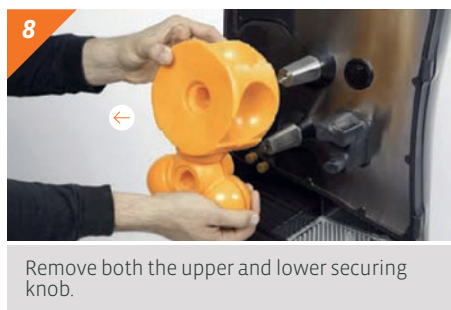
5 Once unlocked pull gently towards you.  
**CAUTION!** The blade is very sharp, be careful not to cut yourself.



6 Remove the peel ejector pulling sideways.



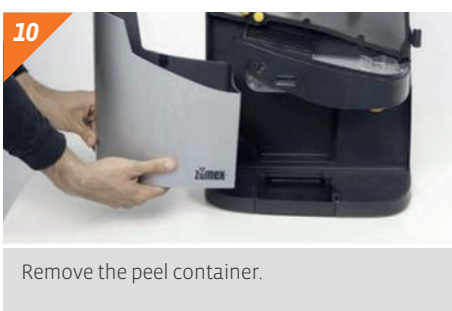
7 Unscrew and remove the securing knobs from the squeezing units.



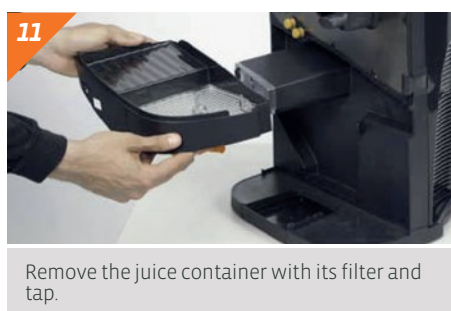
8 Remove both the upper and lower securing knob.



9 Remove the juice jug.



10 Remove the peel container.



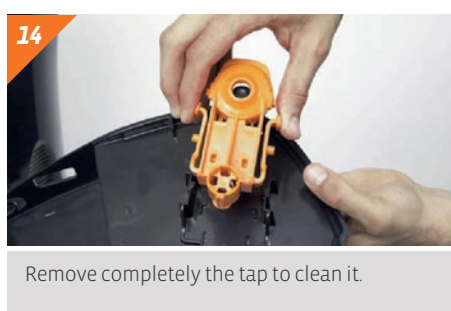
11 Remove the juice container with its filter and tap.



12 Dismantle the juice filter from the juice container.



13 Release the tap by pressing its sides to loose the pins.



14 Remove completely the tap to clean it.

### ! INFORMATION

All pieces, **EXCEPT THE FRONT COVER**, can be cleaned in a dishwasher.

The juice extraction zone and the front cover should be cleaned using a moist cloth and dish washing liquid. Rinse with clean water to remove any washing liquid traces.

## CLEANING INSTRUCTIONS

MINEX

**Caution!** For a correct cleaning process please follow the instructions below. Make sure machine is unplugged from electrical current.

**To assemble the machine** repeat the process in reverse and ready to work.



Assemble the tap in the ju ice container pressing its sides and placing correctly the pins.



Make sure the tapis well fixed.



Place the filter in its correct position.



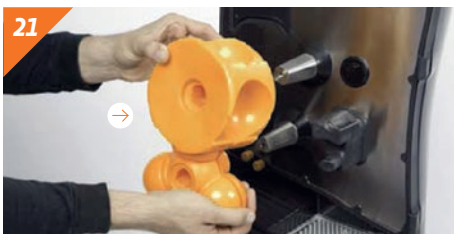
Place the ju ice container with its filter ant tap in its right place making sure it is well fitted.



Place the peel container.



Place the juice jug.



Place de squeezing units.



Place the securing knobs in the squeezing units.



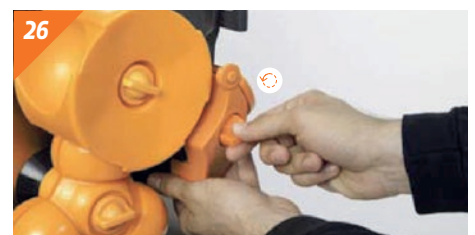
Tighten the securing knobs of the squeezing units.



Insert the twirler blade and support and place the security lock in disassembly position.



Place the peel ejector inserting sideways in the pins.



Turn the blade lock 180° to fasten the assembly.



Place the retainer in the axis, make sure it is correctly fitted can move smoothly.



Place the cover inserting the pins in the hinges.



Place the cover and lock it.